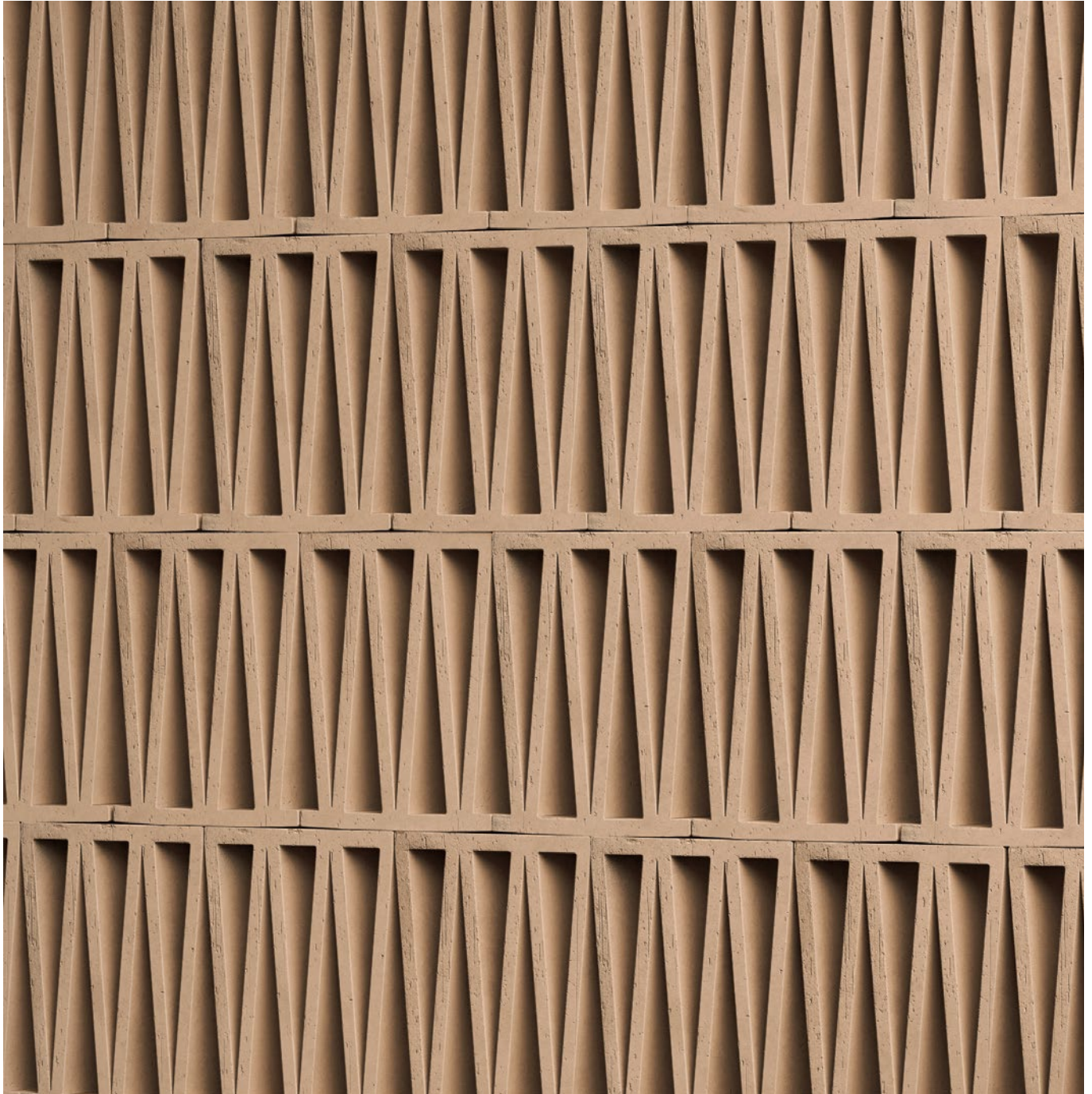


Mutina

Celosia by Patricia Urquiola

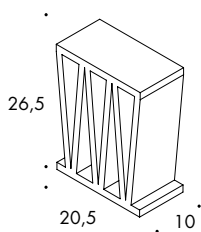


EN

General information
Laying and maintenance tips
Technical features
Packing

General information

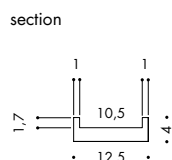
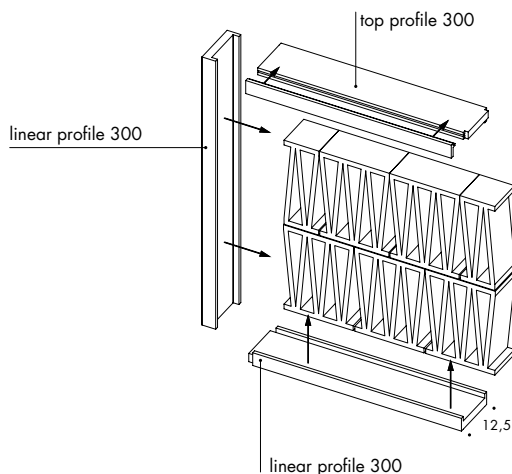
collection	Celosia
design	Patricia Urquiola, 2018
production	Artisanal
material	Extruded terracotta
nominal sizes	20,5-26,5-10 cm (8"-10"-4")
specification	<ul style="list-style-type: none"> - Artisanal extruded partition elements, 10cm thick. - This product is suitable for both residential and commercial areas, to be installed in walls with a maximum height of 4mt. These elements must in any case comply with the technical standards of construction regulation, applicable in the country where they are installed. For the Italian national territory, in particular, they should comply with standard NTC 2018 DECRETO MIN 27/01. - In order to achieve an optimal aesthetic outcome we advise to install Celosia using our wooden profile. The profile is painted and suitable for outdoor use. A top profile with removable sides is provided for ceiling fixing. - As complementary pieces Mutina provide the Mutina sealant, EC 1 plus for VOC emissions. - For installation process see the installation video available on www.mutina.it - The product is suitable for indoor and outdoor areas complying with UNI EN 772-22 marked "F1-moderate exposure".
complementary pieces	Linear profile 300, top profile 300.
awards	Interior Design's Best of Year 2018 German Design Awards 2020
category	UNI 11128/2004



20,5-26,5-10 cm
8"-10"-4"

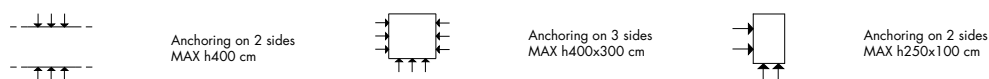
complementary pieces

Linear painted willow profile (also suitable for outdoor use).
Top painted willow profile (also suitable for outdoor use) with one shaped end to make clamping easier.



To make the installation of these items easier, a Mutina sealant is now available: an organic and eco-friendly sealing material, which is sold separately.

wall anchoring scheme



↓ Fisher long shaft fixing SXR 8x80

Laying and maintenance tips

use	Wall – indoor, outdoor.
installation	For installation process see the installation video available on www.mutina.it
recommended adhesive	Mutina sealant: solvents-free, eco-friendly organic sealant
recommended joints	–
recommended fillers	–
cleaning at the end of installation	Avoid drippings during installation. If needed the excess can be removed after the product has dried, using a tool with a sharp edge.
general cleaning (installed tiles)	–
calibers (real size)	20,5 x 26,5 x 10 cm with 1-3 mm tolerance (artisanal product)

Technical features

Artisanal extruded partition elements, 10cm thick. These elements must in any case comply with the technical standards of construction regulation, applicable in the country where they are installed. For the Italian national territory, in particular, they should comply with standard NTC 2018 DECRETO MIN 27/01. This product is suitable for both residential and commercial areas, to be installed in walls with a maximum height of 4mt. In order to achieve an optimal aesthetic outcome we advise to install Celosia using our wooden profile. A top profile with removable sides is provided for ceiling fixing. The product is suitable for indoor and outdoor areas complying with UNI EN 772-22 marked "F1 - moderate exposure".

STANDARD	FEATURES	VALUE REQUIRED	CELOSIA
UNI EN 772-16	dimensions	to declare	T2 – R2
UNI EN 772-21:2011	water absorption	to declare	12.5%
UNI EN 772-5:2016	content of active soluble salts	to declare	S2
UNI EN CEN/TS 772- 22:2006	freeze-thaw resistance	to declare	F1
D.M. 1401/2008	determination of horizontal variable loads	to declare	C2
LEED CERTIFICATION 4.1			10% recycled material
VOC EMISSION			
DECLARATION OF CONTENTS			
SDS			
BPD3			
HDP			

Packing

SIZE	PCS-SQM	PCS-PAL	SQM-PAL	KG-PC	KG-PAL
20,5-26,5-10 cm	18,41	32	1,74	5,50	176,00